

ISOMETRIC VIEW
(EXTERNAL)

- ① DOOR LOCK (FRONT & REAR)
- ② FRONT DOOR (REMOVABLE)
- ③ DISPLAY INTERFACE
- ④ ADJUSTABLE LEVELING FOOT
- ⑤ FRONT CASTERS (SWIVELING)
- ⑥ REAR CASTERS (NON-SWIVELING)
- ⑦ REAR DOOR (REMOVABLE)
- ⑧ SIDE PANEL (REMOVABLE)
- ⑨ SIDE PANEL LATCH/LOCK
- ⑩ LIQUID LINE
- ⑪ DISCHARGE (HOT GAS) LINE
- ⑫ CONDENSATE PUMP OUTLET
- ⑬ ELECTRICAL POWER INPUT
- ⑭ LOW VOLTAGE WIRING INPUT

NOTES:

1. INSTALLATION MUST COMPLY WITH ALL APPLICABLE NATIONAL AND LOCAL CODES.
2. CONSULT THE InRow-RD TECHNICAL DATA MANUAL FOR CAPACITY AND PERFORMANCE DATA.

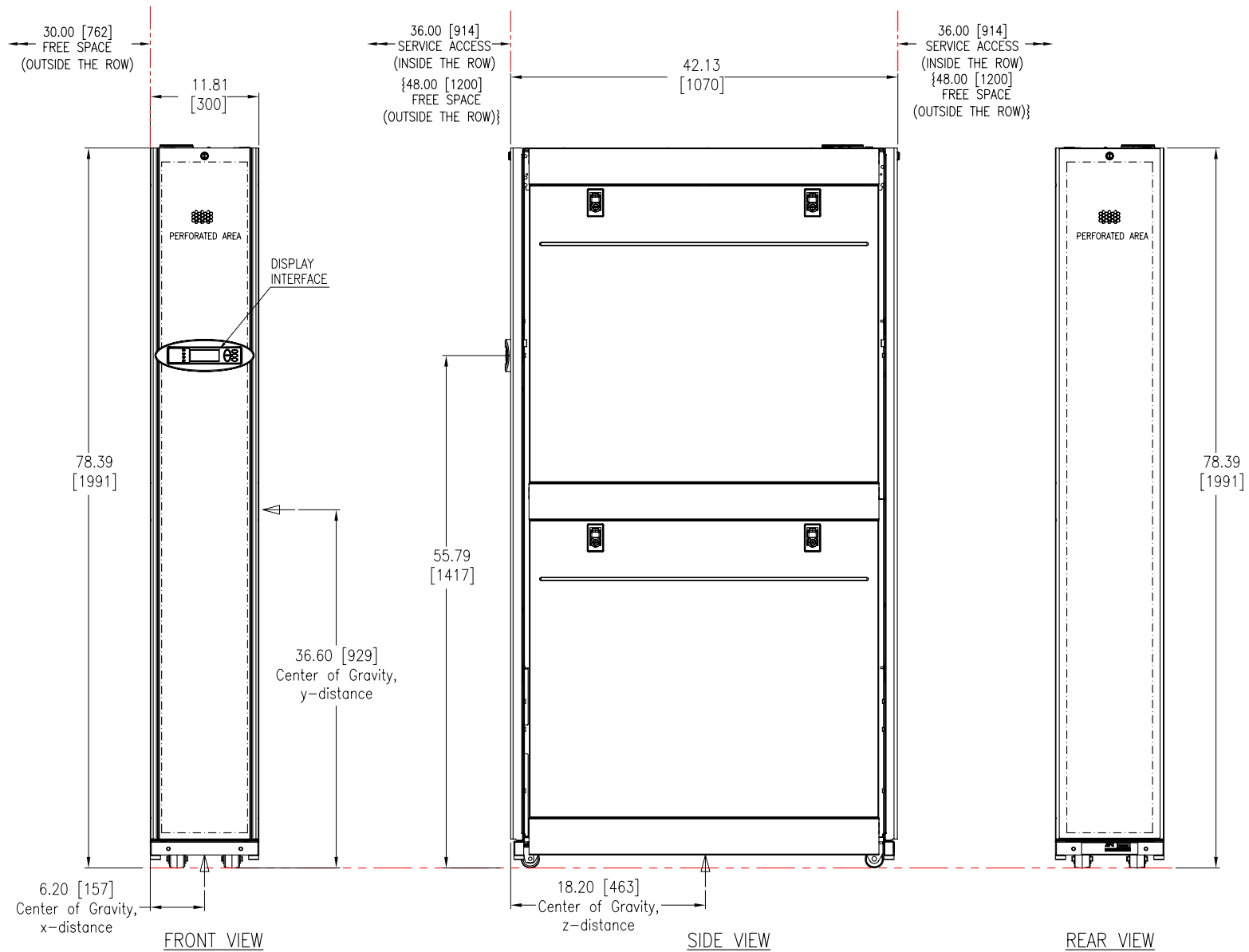
THIS DRAWING AND SPECIFICATIONS HEREIN ARE THE PROPERTY OF AMERICAN POWER CONVERSION AND SHALL NOT BE COPIED, REPRODUCED OR USED IN WHOLE OR IN PART, AS THE BASIS FOR THE MANUFACTURE OR SALE OF ITEMS WITHOUT WRITTEN PERMISSION FROM APC. THIS DRAWING IS BASED UPON LATEST AVAILABLE INFORMATION AND IS SUBJECT TO CHANGE WITHOUT NOTICE.



TITLE: InRow RD - AIR COOLED
 ACRD100 : 208-240V, 60Hz
 ACRD101 : 220-240V, 50Hz
 ISOMETRIC VIEW (EXTERNAL)

DWG NO: ACRD100-101-MM1
 DRAWN: K.NAGENDRA
 ENGINEER: R.GRANTHAM/M.BROWN

REV. 1
 15-SEP-08
 17-SEP-08
 THIRD ANGLE PROJECTION



NOTES:

1. INSTALLATION MUST COMPLY WITH ALL APPLICABLE NATIONAL AND LOCAL CODES.
2. PLEASE REFER TO INSTALLATION MANUAL FOR DETAILS.
3. ALL DIMENSIONS ARE IN INCHES [MILLIMETERS] UNLESS OTHERWISE SPECIFIED.
4. PIPING CONFIGURATION – TOP OR BOTTOM OF UNIT
5. FRONT AND REAR ACCESS IS REQUIRED FOR SERVICE.
6. MAXIMUM WEIGHT OF UNIT IS 404 LBS [183 Kg.]
7. THE AIR COOLED EQUIPMENT HAS BEEN DE-HYDRATED AT THE FACTORY AND SHIPPED WITH HOLDING CHARGE OF 30 PSIG [207kPa] OF NITROGEN.

THIS DRAWING AND SPECIFICATIONS HEREIN ARE THE PROPERTY OF AMERICAN POWER CONVERSION AND SHALL NOT BE COPIED, REPRODUCED OR USED IN WHOLE OR IN PART, AS THE BASIS FOR THE MANUFACTURE OR SALE OF ITEMS WITHOUT WRITTEN PERMISSION FROM APC. THIS DRAWING IS BASED UPON LATEST AVAILABLE INFORMATION AND IS SUBJECT TO CHANGE WITHOUT NOTICE.



TITLE: InRow RD - AIR COOLED
ACRD100 : 208-240V, 60Hz
ACRD101 : 220-240V, 50Hz
MAIN MECHANICAL

DWG NO: ACRD100-101-MM2

REV. 1

DRAWN: K.NAGENDRA 15-SEP-08

THIRD

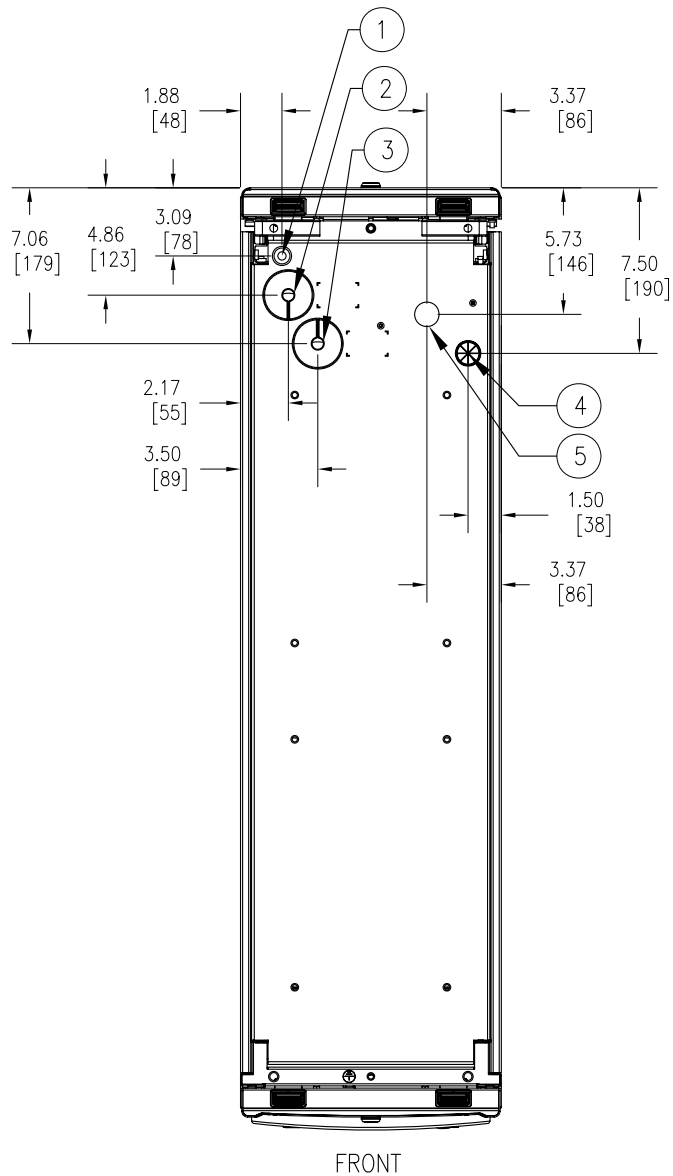
ENGINEER: R.GRANTHAM/M.BROWN 17-SEP-08

ANGLE

APPROVED: GUMMISKEY/C.ZALDIVAR 17-SEP-08

PROJECTION

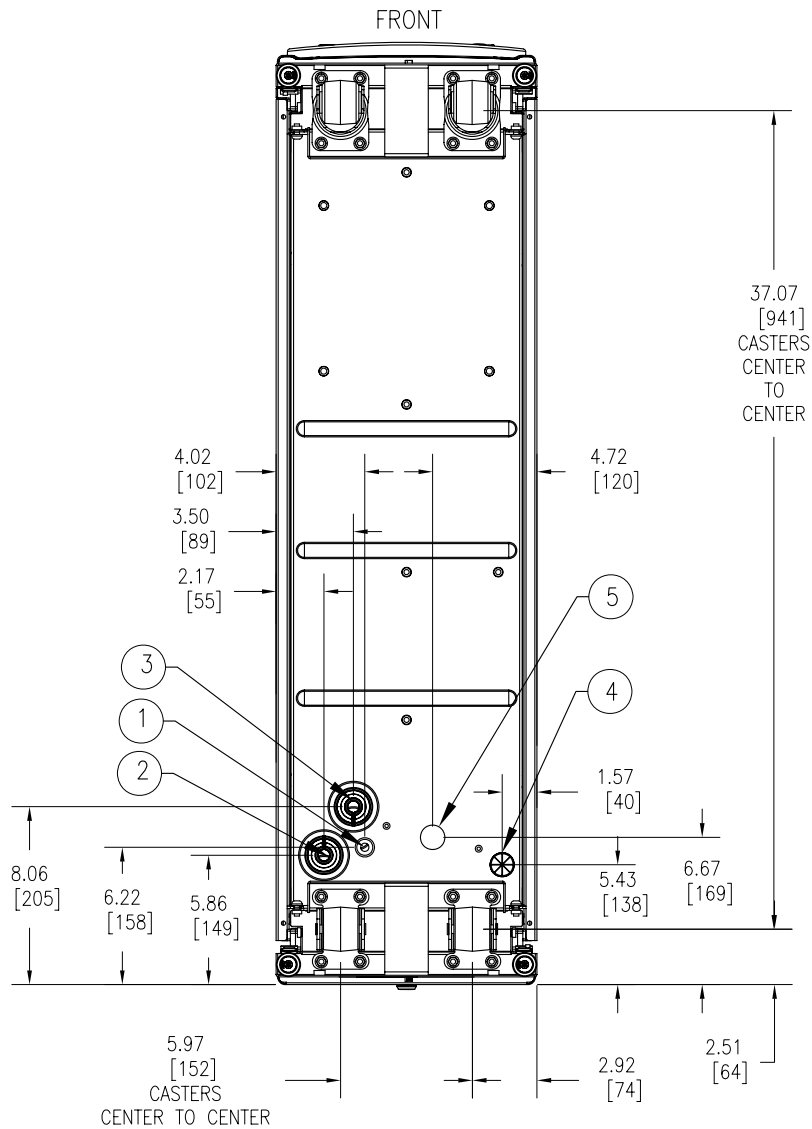
PROJECT: SUBMITTAL DRAWINGS SHEET 2 OF 12



FRONT

TOP VIEW

(PIPING & POWER FEED LOCATIONS FOR TOP ENTRY)



FRONT

BOTTOM VIEW

(PIPING & POWER FEED LOCATIONS FOR BOTTOM ENTRY)

- ① CONDENSATE PUMP OUTPUT
- ② LIQUID LINE
- ③ DISCHARGE (HOT GAS) LINE
- ④ LOW VOLTAGE WIRING INPUT
- ⑤ ELECTRICAL POWER INPUT

NOTES:

1. INSTALLATION MUST COMPLY WITH ALL APPLICABLE NATIONAL AND LOCAL CODES.
2. PLEASE REFER TO INSTALLATION MANUAL FOR DETAILS.
3. ALL DIMENSIONS ARE IN INCHES [MILLIMETERS] UNLESS OTHERWISE SPECIFIED.

THIS DRAWING AND SPECIFICATIONS HEREIN ARE THE PROPERTY OF AMERICAN POWER CONVERSION AND SHALL NOT BE COPIED, REPRODUCED OR USED IN WHOLE OR IN PART, AS THE BASIS FOR THE MANUFACTURE OR SALE OF ITEMS WITHOUT WRITTEN PERMISSION FROM APC. THIS DRAWING IS BASED UPON LATEST AVAILABLE INFORMATION AND IS SUBJECT TO CHANGE WITHOUT NOTICE.



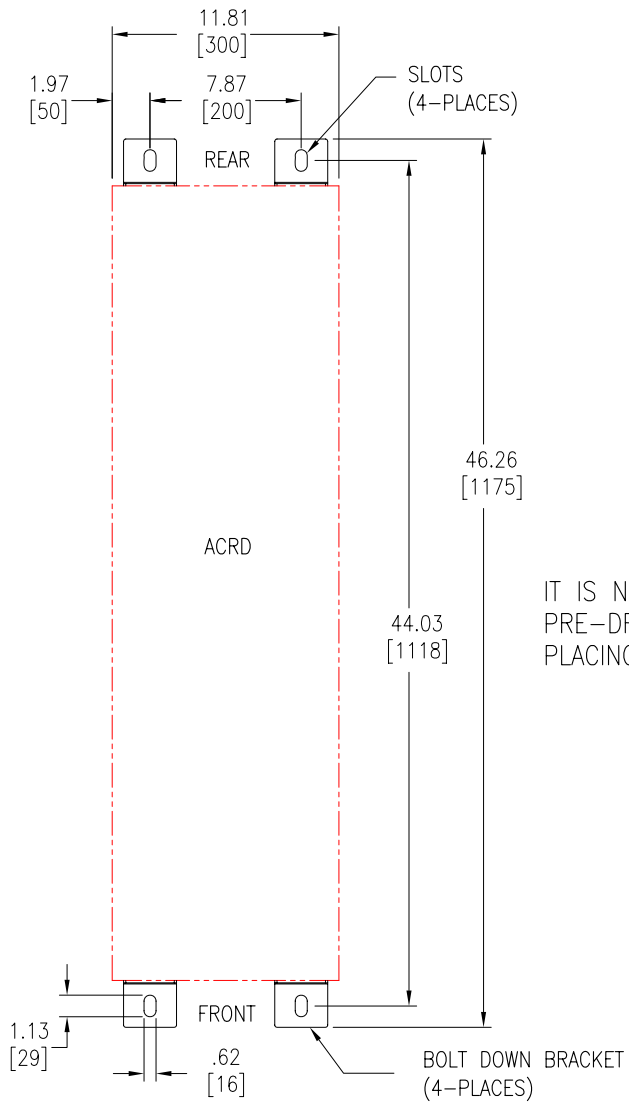
TITLE: InRow RD - AIR COOLED
ACRD100 : 208-240V, 60Hz
ACRD101 : 220-240V, 50Hz
TOP AND BOTTOM VIEWS

DWG NO: ACRD100-101-MM3

REV. 1

DRAWN: K.NAGENDRA	15-SEP-08	THIRD
ENGINEER: R.GRANTHAM/M.BROWN	17-SEP-08	ANGLE
APPROVED: GUMMISKEY/C.ZALDIVAR	17-SEP-08	PROJECTION

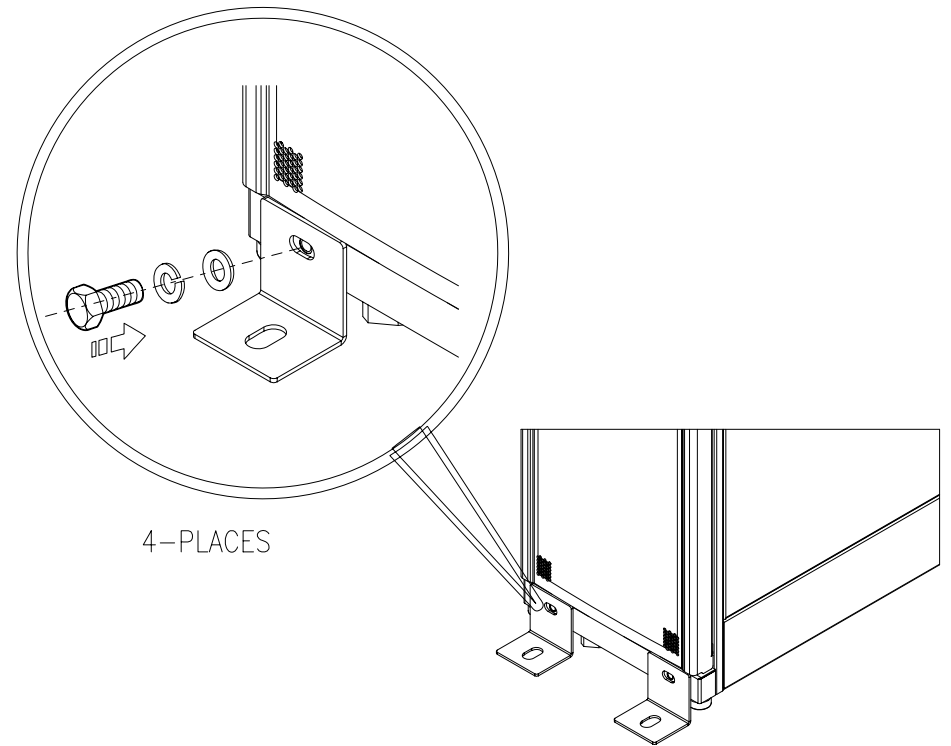
PROJECT: SUBMITTAL DRAWINGS SHEET 3 OF 12



TOP VIEW
(BOLT DOWN BRACKETS
MOUNTING HOLE LOCATIONS)

IT IS NOT RECOMMENDED TO
PRE-DRILL HOLES BEFORE
PLACING RD UNITS IN ROW.

STABILIZING THE InRow RD:
TO PREVENT THE ENCLOSURE FROM MOVING FROM ITS FINAL LOCATION
(IF NOT BAYED TO ANOTHER DEVICE), USE AR7701(BOLT-DOWN KIT)
WHICH IS INCLUDED IN THE SHIP LOOSE PARTS KIT.
ATTACH THE BRACKETS TO THE UNIT AS SHOWN.
USE CODE COMPLIANT FASTENERS TO SECURE THE UNIT TO THE FLOOR.



NOTES:

1. INSTALLATION MUST COMPLY WITH ALL APPLICABLE NATIONAL AND LOCAL CODES.
2. REFER TO INSTALLATION MANUALS FOR DETAILED INSTRUCTION ON INSTALLING THIS EQUIPMENT.
3. REFER TO "InfraStruXure InRow-RD SEISMIC INSTALLATION GUIDE" FOR SEISMIC ANCHORING GUIDELINES.
4. ALL DIMENSIONS ARE IN INCHES [MILLIMETERS] UNLESS OTHERWISE SPECIFIED.

THIS DRAWING AND SPECIFICATIONS HEREIN ARE THE PROPERTY OF AMERICAN POWER CONVERSION AND SHALL NOT BE COPIED, REPRODUCED OR USED IN WHOLE OR IN PART, AS THE BASIS FOR THE MANUFACTURE OR SALE OF ITEMS WITHOUT WRITTEN PERMISSION FROM APC. THIS DRAWING IS BASED UPON LATEST AVAILABLE INFORMATION AND IS SUBJECT TO CHANGE WITHOUT NOTICE.

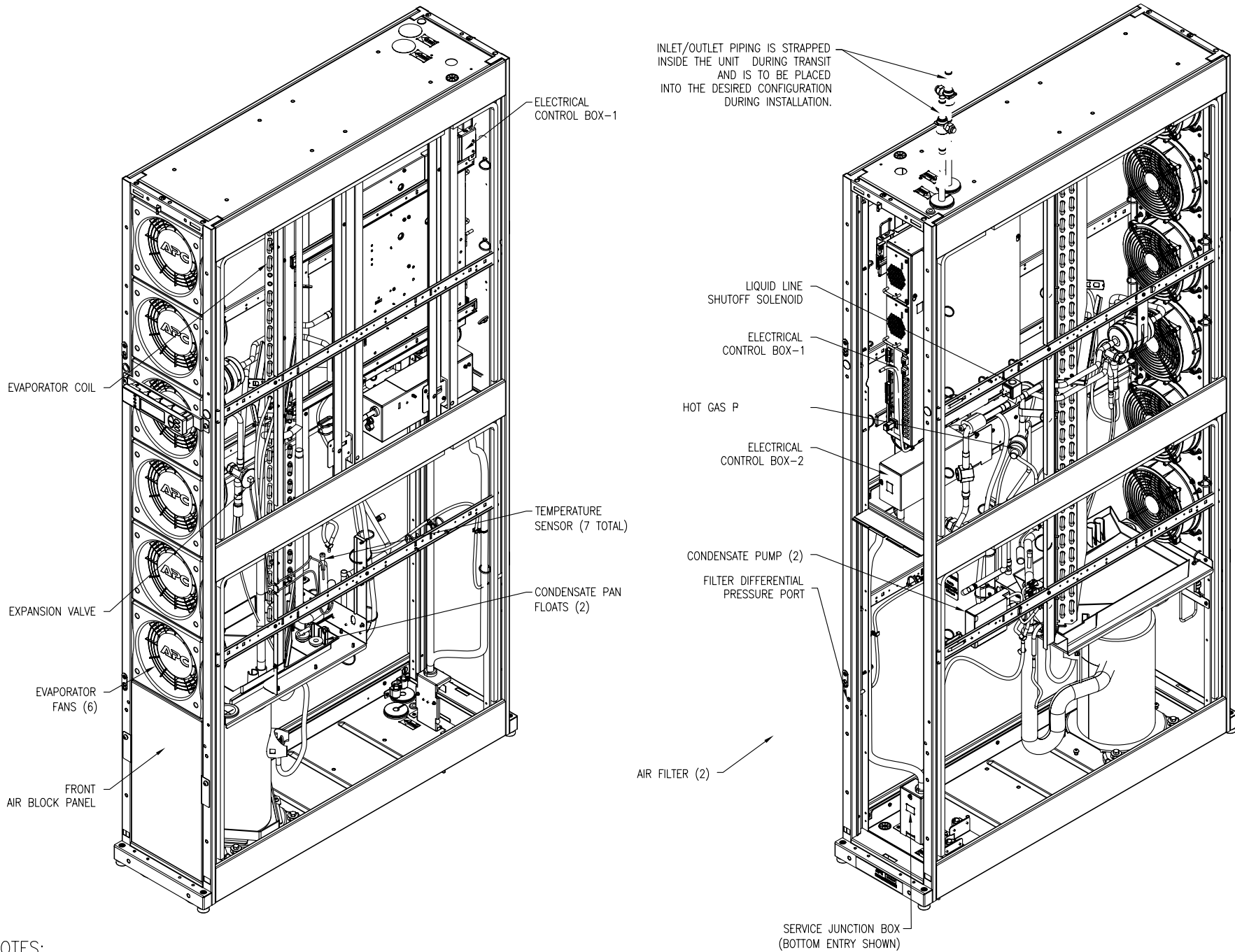


TITLE:
InfraStruXure
InRow RD - AIR COOLED
ACRD100 : 208-240V, 60Hz
ACRD101 : 220-240V, 50Hz
BOLT DOWN BRACKETS

DWG NO: ACRD100-101-MM4

REV. 1

DRAWN:	K.NAGENDRA	15-SEP-08	THIRD
ENGINEER:	R.GRANTHAM/M.BROWN	17-SEP-08	ANGLE
APPROVED:	GUMMISKEY/C.ZALDIVAR	17-SEP-08	PROJECTION



NOTES:

1. INSTALLATION MUST COMPLY WITH ALL APPLICABLE NATIONAL AND LOCAL CODES.
2. PLEASE REFER TO INSTALLATION MANUAL FOR DETAILS.
3. UNIT IS SHIPPED CONFIGURED FOR TOP ENTRY.
4. SOME MECHANICAL COMPONENTS HAVE BEEN OMITTED FOR PURPOSE OF CLARITY.

THIS DRAWING AND SPECIFICATIONS HEREIN ARE THE PROPERTY OF AMERICAN POWER CONVERSION AND SHALL NOT BE COPIED, REPRODUCED OR USED IN WHOLE OR IN PART, AS THE BASIS FOR THE MANUFACTURE OR SALE OF ITEMS WITHOUT WRITTEN PERMISSION FROM APC. THIS DRAWING IS BASED UPON LATEST AVAILABLE INFORMATION AND IS SUBJECT TO CHANGE WITHOUT NOTICE.



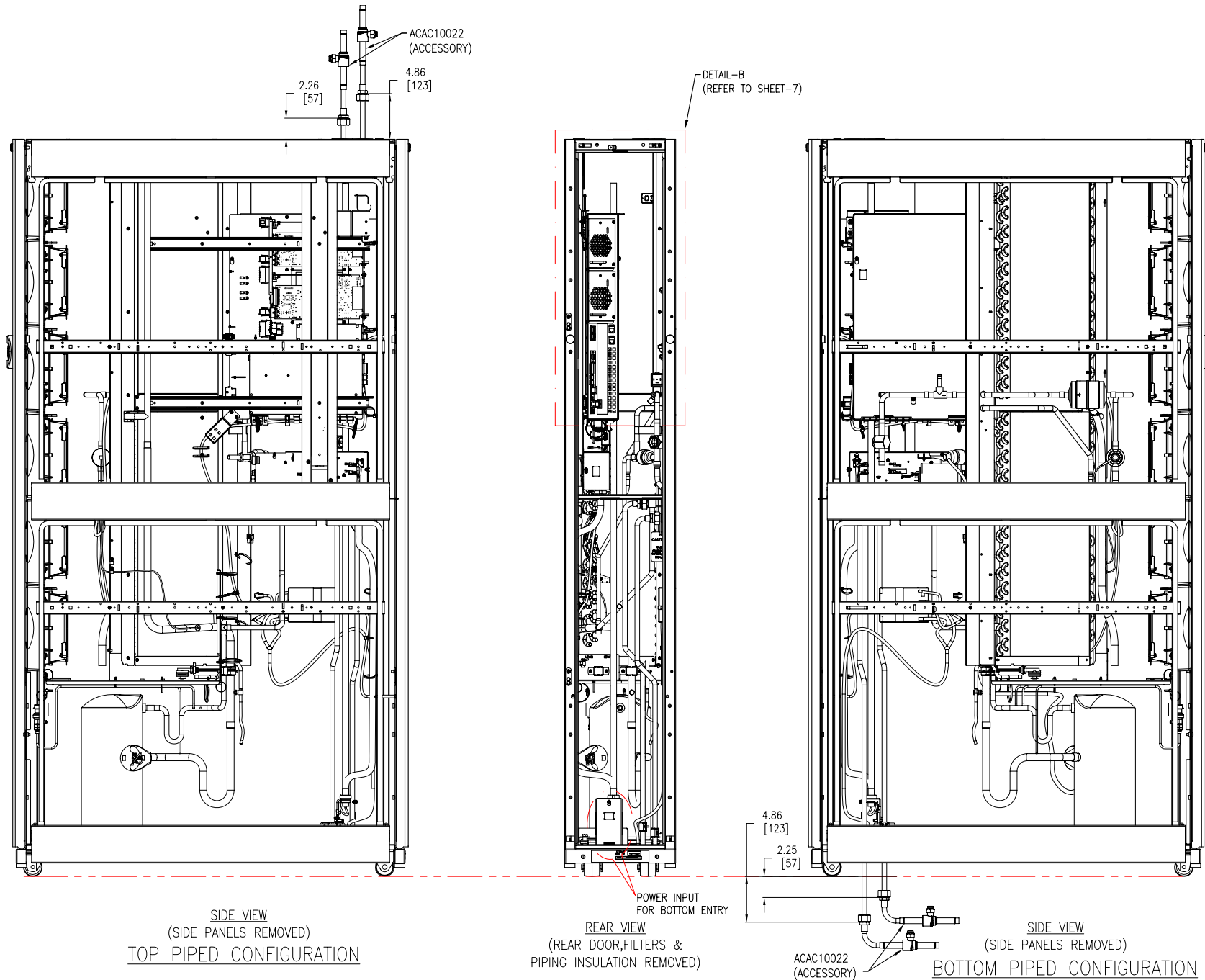
TITLE:
 InRow RD - AIR COOLED
 ACRD100 : 208-240V, 60Hz
 ACRD101 : 220-240V, 50Hz
 ISOMETRIC VIEW (INTERNAL)

DWG NO: ACRD100-101-MM5

REV. 1

DRAWN: K.NAGENDRA	15-SEP-08	THIRD
ENGINEER: R.GRANTHAM/M.BROWN	17-SEP-08	ANGLE
APPROVED: GUMMISKEY/C.ZALDIVAR	17-SEP-08	PROJECTION

PROJECT: SUBMITTAL DRAWINGS **SHEET 5 OF 12**



SIDE VIEW
(SIDE PANELS REMOVED)
TOP PIPED CONFIGURATION

REAR VIEW
(REAR DOOR, FILTERS &
PIPING INSULATION REMOVED)

SIDE VIEW
(SIDE PANELS REMOVED)
BOTTOM PIPED CONFIGURATION

NOTES:

1. INSTALLATION MUST COMPLY WITH ALL APPLICABLE NATIONAL AND LOCAL CODES.
2. PLEASE REFER TO INSTALLATION MANUAL FOR DETAILS.
3. UNIT IS SHIPPED CONFIGURED FOR TOP ENTRY.
4. SOME MECHANICAL COMPONENTS HAVE BEEN OMITTED FOR PURPOSE OF CLARITY.
5. ALL DIMENSIONS ARE IN INCHES [MILLIMETERS] UNLESS OTHERWISE SPECIFIED.

THIS DRAWING AND SPECIFICATIONS HEREIN ARE THE PROPERTY OF AMERICAN POWER CONVERSION AND SHALL NOT BE COPIED, REPRODUCED OR USED IN WHOLE OR IN PART, AS THE BASIS FOR THE MANUFACTURE OR SALE OF ITEMS WITHOUT WRITTEN PERMISSION FROM APC. THIS DRAWING IS BASED UPON LATEST AVAILABLE INFORMATION AND IS SUBJECT TO CHANGE WITHOUT NOTICE.



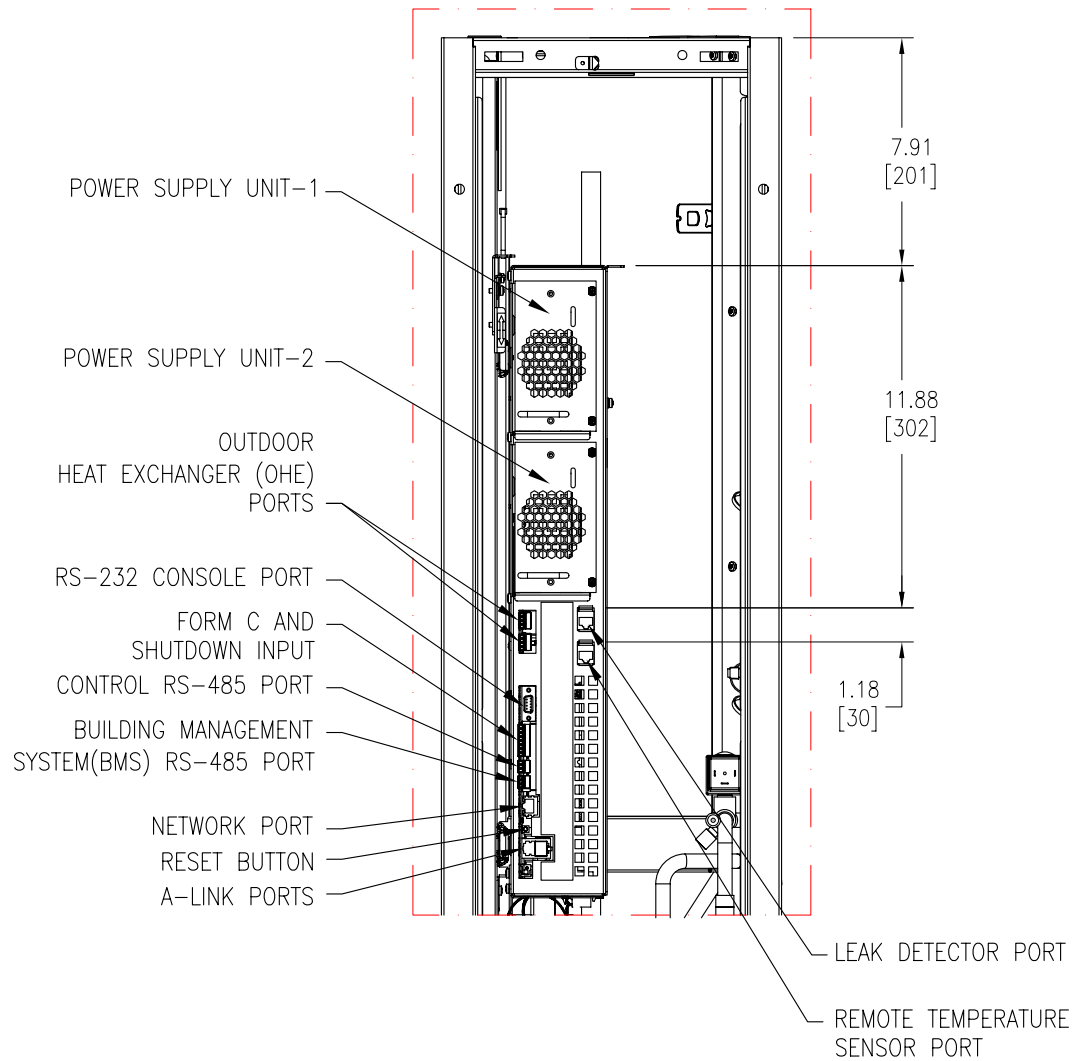
TITLE:
InRow RD - AIR COOLED
ACRD100 : 208-240V, 60Hz
ACRD101 : 220-240V, 50Hz
INTERNAL VIEWS

PROJECT: SUBMITTAL DRAWINGS | SHEET 6 OF 12

DWG NO: ACRD100-101-MM6

DRAWN: K.NAGENDRA 15-SEP-08
ENGINEER: R.GRANTHAM/M.BROWN 17-SEP-08
APPROVED: GUMISKEY/C.ZALDIVAR 17-SEP-08

REV. 1
THIRD ANGLE PROJECTION



NOTES:

1. INSTALLATION MUST COMPLY WITH ALL APPLICABLE NATIONAL AND LOCAL CODES.
2. PLEASE REFER TO INSTALLATION MANUAL FOR DETAILS.
3. ALL DIMENSIONS ARE IN INCHES [MILLIMETERS] UNLESS OTHERWISE SPECIFIED.

THIS DRAWING AND SPECIFICATIONS HEREIN ARE THE PROPERTY OF AMERICAN POWER CONVERSION AND SHALL NOT BE COPIED, REPRODUCED OR USED IN WHOLE OR IN PART, AS THE BASIS FOR THE MANUFACTURE OR SALE OF ITEMS WITHOUT WRITTEN PERMISSION FROM APC. THIS DRAWING IS BASED UPON LATEST AVAILABLE INFORMATION AND IS SUBJECT TO CHANGE WITHOUT NOTICE.



TITLE: InRow RD - AIR COOLED
 ACRD100 : 208-240V, 60Hz
 ACRD101 : 220-240V, 50Hz
 INTERNAL CONNECTIONS

DWG NO: ACRD100-101-MM7

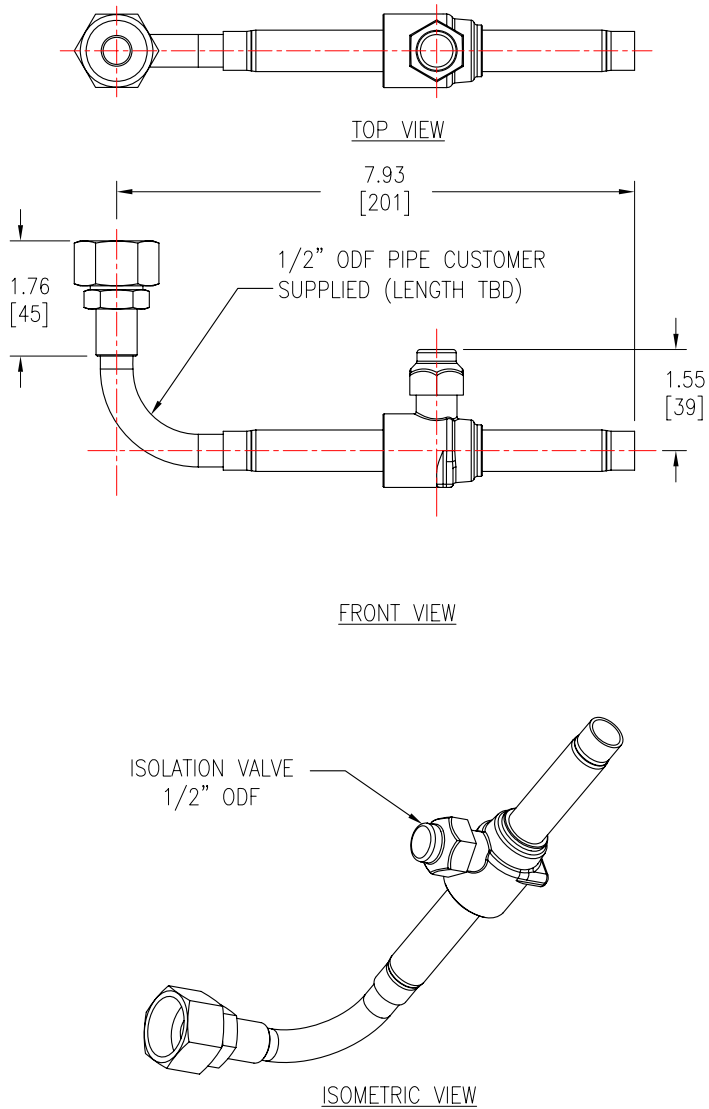
REV. 1

DRAWN: K.NAGENDRA	15-SEP-08	THIRD ANGLE PROJECTION
ENGINEER: R.GRANTHAM/M.BROWN	17-SEP-08	
APPROVED: GUMMISKEY/C.ZALDIVAR	17-SEP-08	

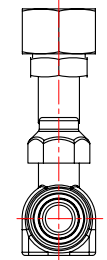
PROJECT: SUBMITTAL DRAWINGS | SHEET 7 OF 12

ACCESSORY SKU #ACAC10022
ISOLATION BALL VALVE ASSEMBLIES

BOTTOM PIPING CONFIGURATION

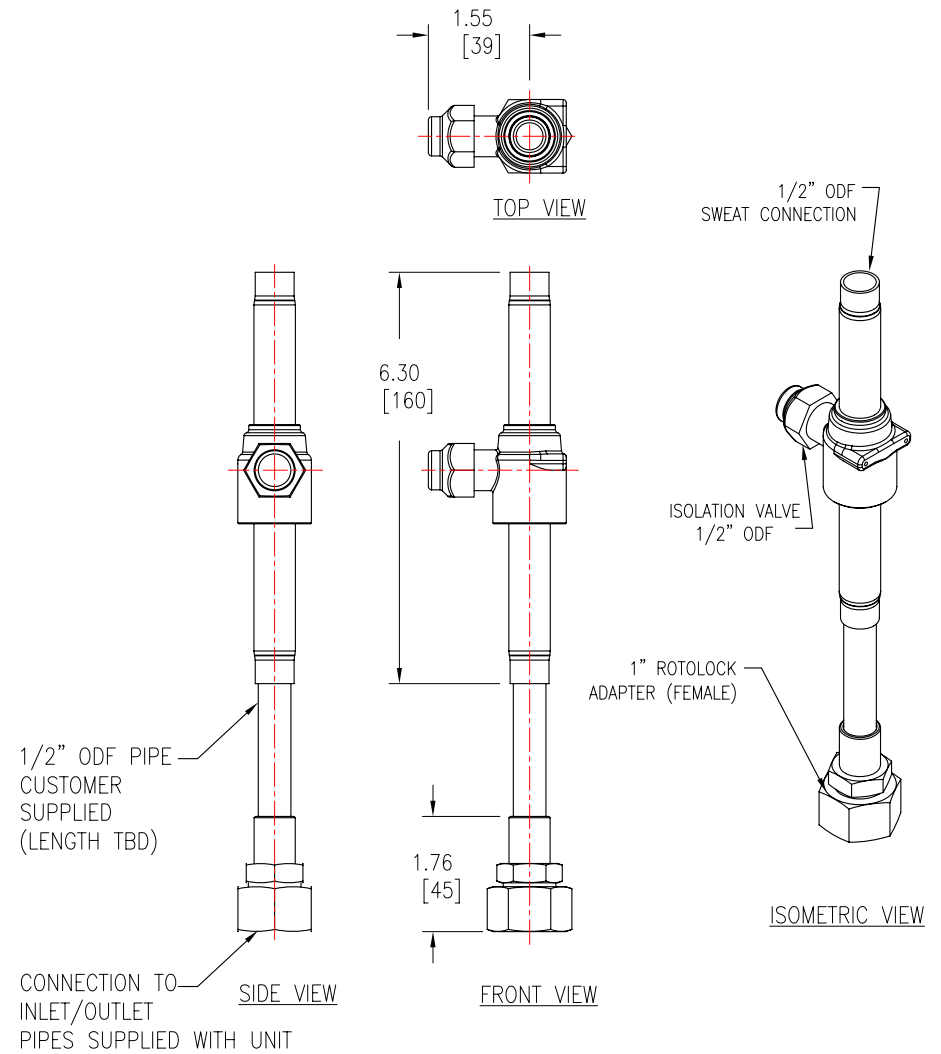


CONNECTION TO INLET/OUTLET PIPES SUPPLIED WITH UNIT



SIDE VIEW

TOP PIPING CONFIGURATION



NOTES:

1. INSTALLATION MUST COMPLY WITH ALL APPLICABLE NATIONAL AND LOCAL CODES.
2. PLEASE REFER TO INSTALLATION MANUAL FOR DETAILS.
3. ALL DIMENSIONS ARE IN INCHES [MILLIMETERS] UNLESS OTHERWISE SPECIFIED.
4. TEFLON O-RING (SUPPLIED) REQUIRED WITH BOTH CONFIGURATION.

THIS DRAWING AND SPECIFICATIONS HEREIN ARE THE PROPERTY OF AMERICAN POWER CONVERSION AND SHALL NOT BE COPIED, REPRODUCED OR USED IN WHOLE OR IN PART, AS THE BASIS FOR THE MANUFACTURE OR SALE OF ITEMS WITHOUT WRITTEN PERMISSION FROM APC. THIS DRAWING IS BASED UPON LATEST AVAILABLE INFORMATION AND IS SUBJECT TO CHANGE WITHOUT NOTICE.



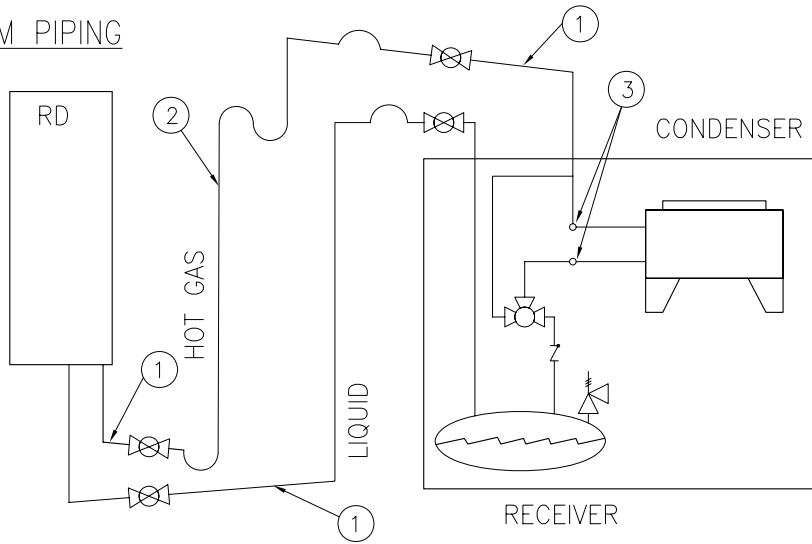
TITLE: InRow RD - AIR COOLED
ACRD100 : 208-240V, 60Hz
ACRD101 : 220-240V, 50Hz
PIPING CONNECTIONS

DWG NO: ACRD100-101-MM8

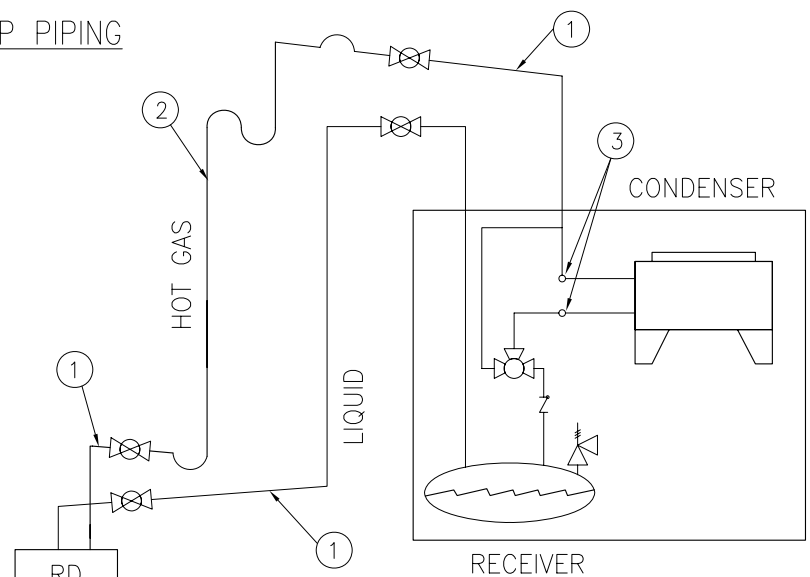
REV. 1

DRAWN: K.NAGENDRA	15-SEP-08	THIRD ANGLE PROJECTION
ENGINEER: R.GRANTHAM/M.BROWN	17-SEP-08	
APPROVED: GUMMISKEY/C.ZALDIVAR	17-SEP-08	

BOTTOM PIPING



TOP PIPING



① Pitch in direction of refrigerant flow, 1/2 in per 10 ft (4mm per m)	Check valve
② Reduction of piping diameter, for vertical run (if necessary)	P-Trap
③ Schrader Valve	S-Trap
Shutoff valve	Inverted Trap
Head pressure control valve	Pressure relief valve

RECOMMENDED LINE SIZES

EQUIVALENT LENGTH m (ft)	LINE TYPE	ACRD100, ACRD101(OD)
15 (50)	DISCHARGE LINE (HORIZONTAL/VERTICAL DOWN)	5/8 ACR
	DISCHARGE LINE (VERTICAL RISER)	1/2 ACR
	LIQUID LINE	1/2 ACR
30 (100)	DISCHARGE LINE (HORIZONTAL/VERTICAL DOWN)	5/8 ACR
	DISCHARGE LINE (VERTICAL RISER)	1/2 ACR
	LIQUID LINE	1/2 ACR
46 (150)	DISCHARGE LINE (HORIZONTAL/VERTICAL DOWN)	5/8 ACR
	DISCHARGE LINE (VERTICAL RISER)	1/2 ACR
	LIQUID LINE	1/2 ACR

TYPE OF FITTING OR VALVE-EQUIVALENT LENGTH OF PIPE IN m (ft)

ACR PIPE SIZE, OD	GATE VALVE	STANDARD ELBOW 90°	REDUCED COUPLING	SIDE OUTLET T	ANGLE VALVE
1/2	0.18 (0.6)	0.43 (1.4)	0.43 (1.4)	0.82 (2.7)	1.83 (6.0)
5/8	0.21 (0.7)	0.49 (1.6)	0.49 (1.6)	0.91 (3.0)	2.13 (7.0)

NOTES:

1. INSTALLATION MUST COMPLY WITH ALL APPLICABLE NATIONAL AND LOCAL CODES.
2. PLEASE REFER TO INSTALLATION GUIDE.
3. ROUTE PIPING THROUGH THE TOP OR BOTTOM OF THE InRow-RD.
4. ALL LINES ARE TYPE L ACR COPPER TUBING.
5. S-TRAP THE VERTICAL DISCHARGE LINE EVERY 6m (20 ft) TO ENSURE PROPER OIL RETURN.
6. CHANGE THE SIZE OF THE PIPE AFTER THE P-TRAP. REFER REFRIGERATION PIPING DIAGRAM.
7. MAXIMUM PIPING RUN IS 61m (200 ft) EQUIVALENT LENGTH. SIZE THE PIPING PURSUANT TO ACCEPTED REFRIGERATION PRACTICE.
8. DO NOT INSTALL THE AIR-COOLED CONDENSER BELOW THE InRow-RD. THE CONDENSER MUST BE POSITIONED ABOVE OR SAME LEVEL AS THE InRow-RD TO ENSURE PROPER FUNCTION.
9. WHEN BRAZING FIELD-INSTALLED COPPER REFRIGERATION LINES, USE A NITROGEN PURGE TO MINIMIZE CONTAMINATION OF THE REFRIGERATION SYSTEM DURING BRAZING PROCESS.

NOTE:

1. ALL REFRIGERANT PIPES MUST BE STRAIGHT ACR TO HAVE 565 PSIG OR ABOVE MWP.
2. THE EQUIVALENT LENGTH OF 1/2" OD DISCHARGE LINE PIPE SHOULD BE KEPT TO LESS THAN 18 m (60 ft).
3. THE TOTAL EQUIVALENT LENGTH OF DISCHARGE LINE SHOULD BE LESS THAN 46 m (150 ft) TO PREVENT AN EXCESSIVE HOT GAS PRESSURE DROP WHICH CAN INCREASE THE DISCHARGE PRESSURE DURING HOT SUMMER DAY'S.
4. TO HAVE A TOTAL EQUIVALENT LENGTH OF 61 m (200 ft), THE LOAD MUST BE REDUCED BY 5%.

THIS DRAWING AND SPECIFICATIONS HEREIN ARE THE PROPERTY OF AMERICAN POWER CONVERSION AND SHALL NOT BE COPIED, REPRODUCED OR USED IN WHOLE OR IN PART, AS THE BASIS FOR THE MANUFACTURE OR SALE OF ITEMS WITHOUT WRITTEN PERMISSION FROM APC. THIS DRAWING IS BASED UPON LATEST AVAILABLE INFORMATION AND IS SUBJECT TO CHANGE WITHOUT NOTICE.



TITLE: InRow RD - AIR COOLED
ACRD100 : 208-240V, 60Hz
ACRD101 : 220-240V, 50Hz
PIPING DIAGRAM

DWG NO: ACRD100-101-MM9 REV. 1

DRAWN: K.NAGENDRA	15-SEP-08	THIRD
ENGINEER: R.GRANTHAM/M.BROWN	17-SEP-08	ANGLE
APPROVED: DUMMSKEY/C.ZALDIVAR	17-SEP-08	PROJECTION

POWER CONNECTIONS

SKU	MCA	MOP	FLA	COMPRESSOR		POWER
				LRA	RLA	
ACRD100 208-240, 60Hz	25	40	N/A	87.5	16.0	4.6
ACRD101 220-240, 50Hz	N/A	N/A	21	97.0	16.3	4.4

ABOVE DATA IS BASED ON MAXIMUM OPERATING CONDITIONS.

MCA – MINIMUM CIRCUIT AMPACITY

MOP – MAXIMUM OVERCURRENT PROTECTION

FLA – FULL LOAD AMPS

LRA – LOCKED ROTOR AMPS

RLA – RATED LOAD AMPS

PIPING CONNECTIONS

CONNECTION	TYPE	ACRD100-101
REFRIGERANT DISCHARGE	1-IN ROTOLOCK *	1/2-IN ODF
REFRIGERANT LIQUID	1-IN ROTOLOCK *	1/2-IN ODF
CONDENSATE DRAIN		3/16-IN ID 5/16-IN OD

* USE THE PROVIDED TEFLON O-RING TO PREVENT LEAKAGE.
TIGHTEN THE ROTOLOCK NUT TO 55LB-FT [75Nm].

NOTES:

1. INSTALLATION MUST COMPLY WITH ALL APPLICABLE NATIONAL AND LOCAL CODES.
2. PLEASE REFER TO INSTALLATION MANUAL FOR DETAILS.

THIS DRAWING AND SPECIFICATIONS HEREIN ARE THE PROPERTY OF AMERICAN POWER CONVERSION AND SHALL NOT BE COPIED, REPRODUCED OR USED IN WHOLE OR IN PART, AS THE BASIS FOR THE MANUFACTURE OR SALE OF ITEMS WITHOUT WRITTEN PERMISSION FROM APC. THIS DRAWING IS BASED UPON LATEST AVAILABLE INFORMATION AND IS SUBJECT TO CHANGE WITHOUT NOTICE.



TITLE: InRow RD - AIR COOLED
ACRD100 : 208-240V, 60Hz
ACRD101 : 220-240V, 50Hz
ELECTRICAL AND PIPING DATA

DWG NO: ACRD100-101-ME1

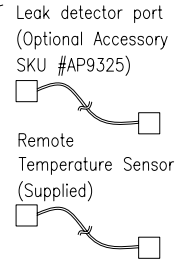
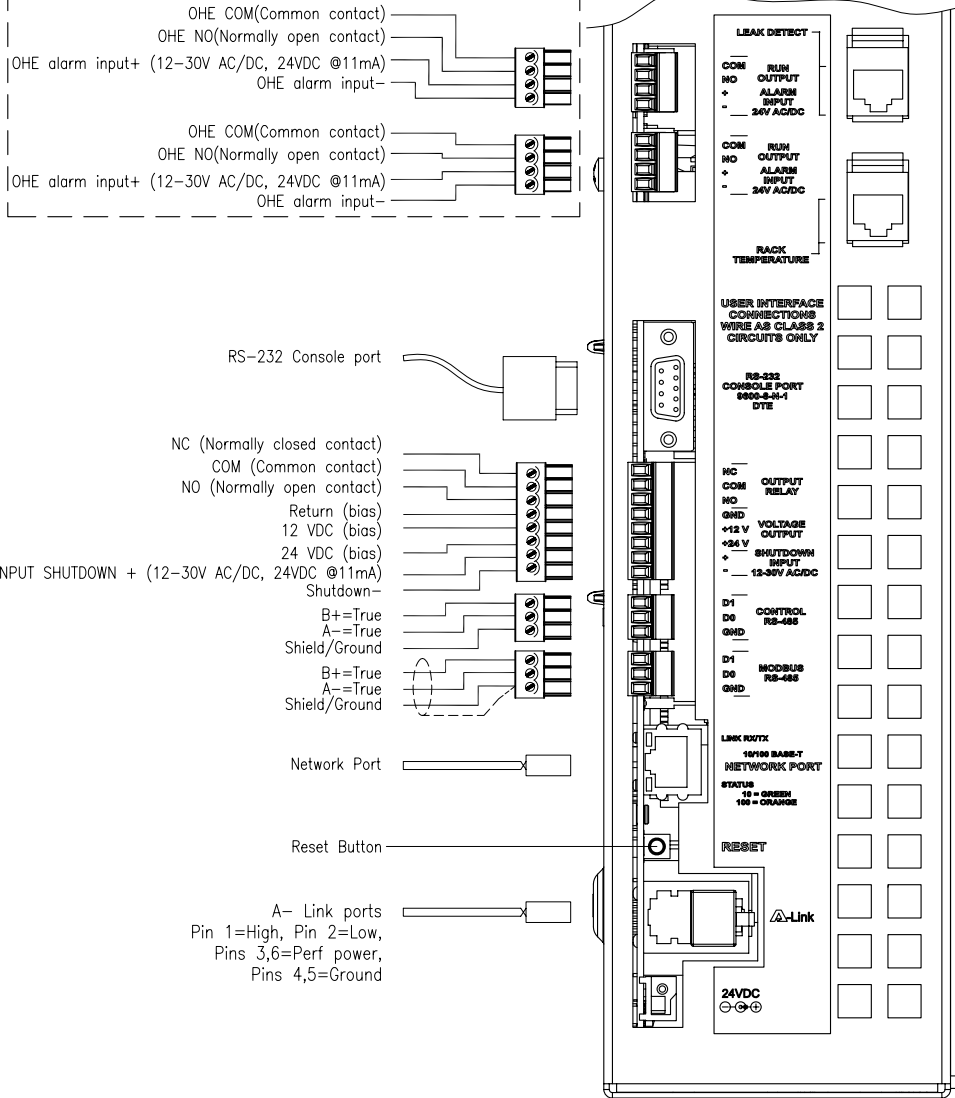
REV. 1

DRAWN: K.NAGENDRA	15-SEP-08	THIRD
ENGINEER: R.GRANTHAM/M.BROWN	17-SEP-08	ANGLE
APPROVED: GUMMISKEY/C.ZALDIVAR	17-SEP-08	PROJECTION

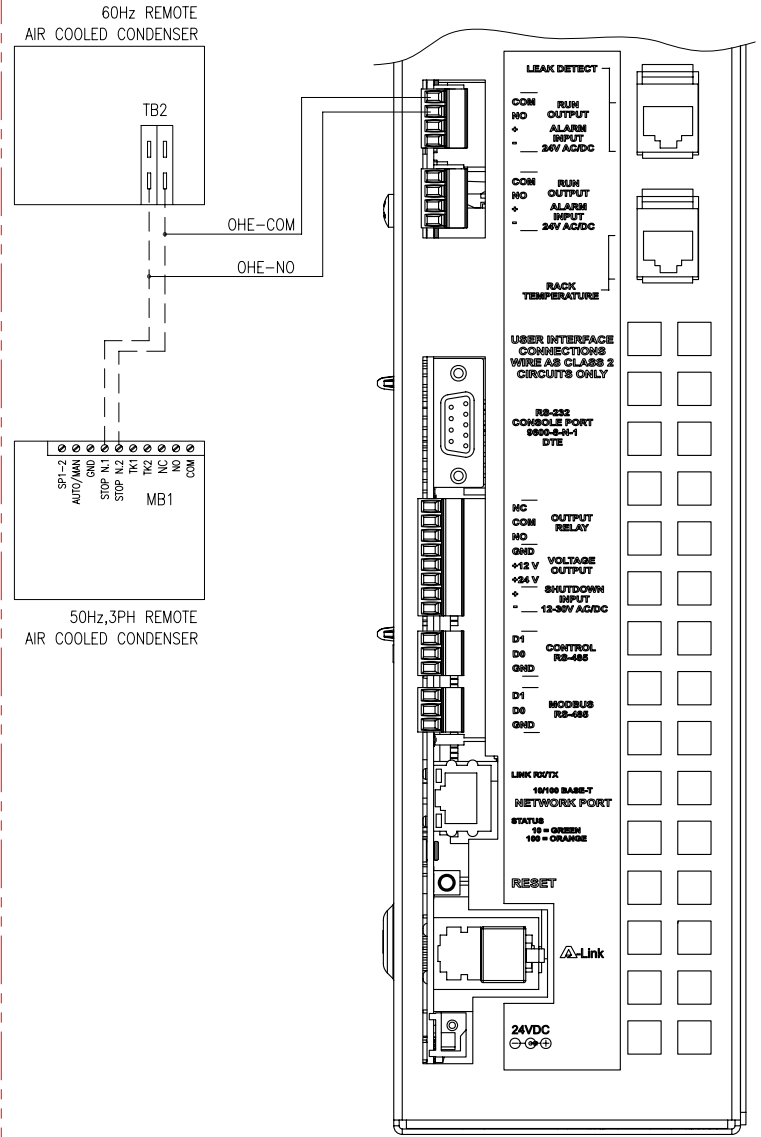
PROJECT: SUBMITTAL DRAWINGS | SHEET 10 OF 12

USER INTERFACE CONNECTIONS

OHE (OUTDOOR HEAT EXCHANGERS) CONNECTIONS (OPTIONAL)



CONDENSER WIRING (OPTIONAL)



NOTES:

1. INSTALLATION MUST COMPLY WITH ALL APPLICABLE NATIONAL AND LOCAL CODES.
2. PLEASE REFER TO INSTALLATION MANUAL FOR DETAILS.
3. REMOTE AIR COOLED CONDENSERS HAVE JUMPERS INSTALLED FOR STAND ALONE OPERATIONS. JUMPER MUST BE REMOVED FOR REMOTE OPERATION BY THE ACRD.
4. ACRD PROVIDES A DRY CONTACT CLOSURE FOR REMOTE OPERATION OF THE AIR COOLED CONDENSERS

THIS DRAWING AND SPECIFICATIONS HEREIN ARE THE PROPERTY OF
 AMERICAN POWER CONVERSION AND SHALL NOT BE COPIED,
 REPRODUCED OR USED IN WHOLE OR IN PART, AS THE BASIS FOR
 THE MANUFACTURE OR SALE OF ITEMS WITHOUT WRITTEN PERMISSION
 FROM APC. THIS DRAWING IS BASED UPON LATEST AVAILABLE
 INFORMATION AND IS SUBJECT TO CHANGE WITHOUT NOTICE.



TITLE:
 InRow RD - AIR COOLED
 ACRD100 : 208-240V, 60Hz
 ACRD101 : 220-240V, 50Hz
 USER INTERFACE

DWG NO: ACRD100-101-ME2

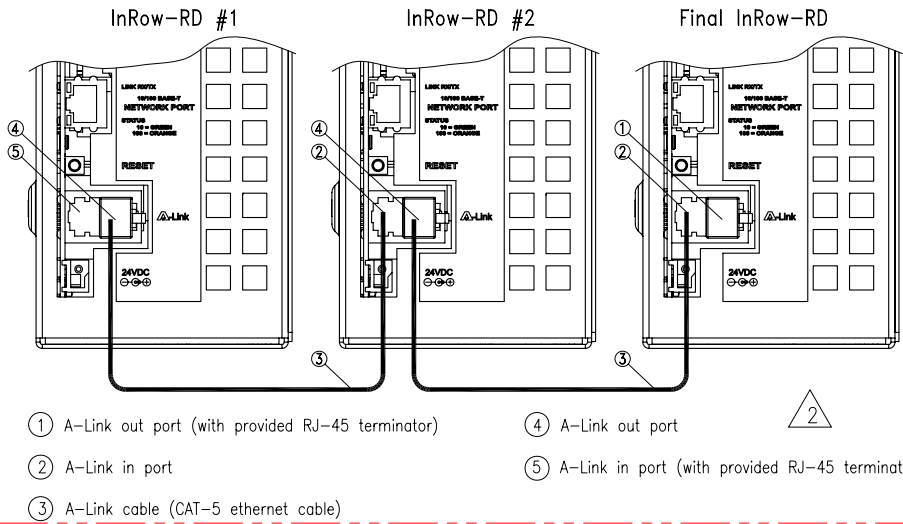
REV. 1

DRAWN: K.NAGENDRA 15-SEP-08
ENGINEER: R.GRANTHAM/M.BROWN 17-SEP-08
APPROVED: GUMISKEY/C.ZALDIVAR 17-SEP-08

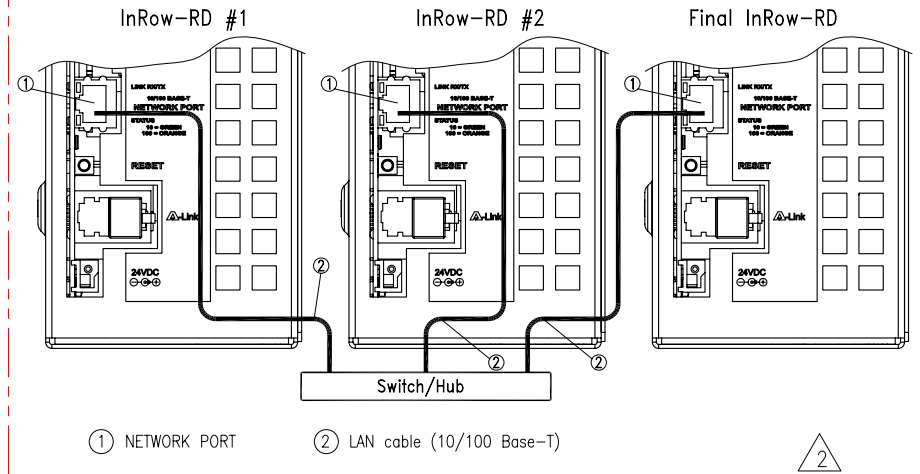
PROJECT: SUBMITTAL DRAWINGS SHEET 11 OF 12

THIRD ANGLE PROJECTION

A-LINK CONNECTIONS

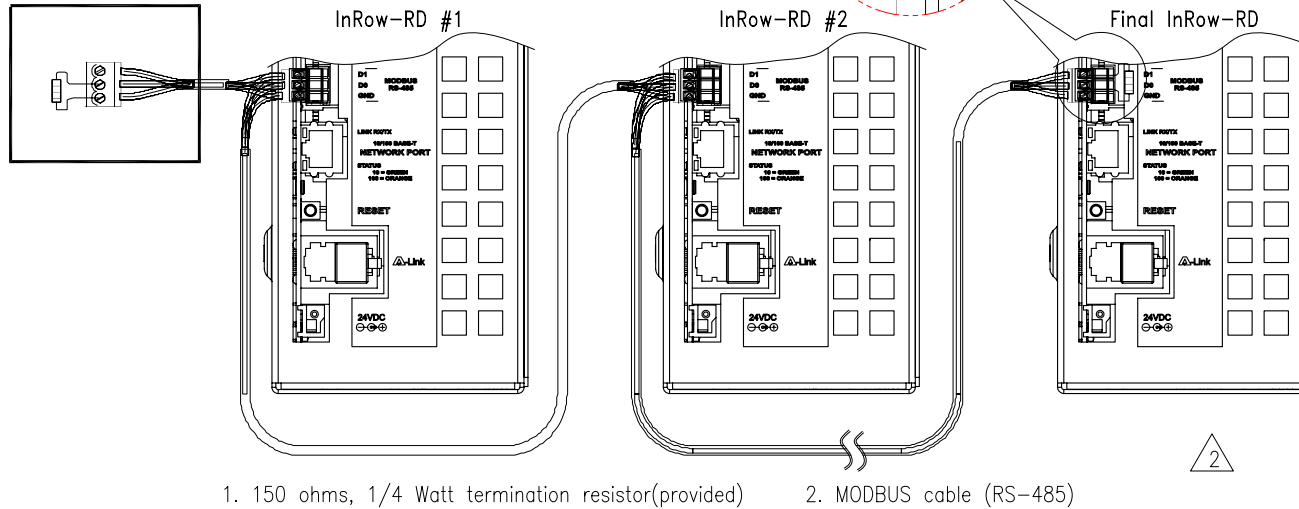


NETWORK PORT CONNECTIONS



BUILDING MANAGEMENT SYSTEM

ModBus MASTER



NOTES:

- INSTALLATION MUST COMPLY WITH ALL APPLICABLE NATIONAL AND LOCAL CODES.
- INTER-CONNECTING WIRING IS SUPPLIED AND FIELD INSTALLED BY OTHERS.

THIS DRAWING AND SPECIFICATIONS HEREIN ARE THE PROPERTY OF AMERICAN POWER CONVERSION AND SHALL NOT BE COPIED, REPRODUCED OR USED IN WHOLE OR IN PART, AS THE BASIS FOR THE MANUFACTURE OR SALE OF ITEMS WITHOUT WRITTEN PERMISSION FROM APC. THIS DRAWING IS BASED UPON LATEST AVAILABLE INFORMATION AND IS SUBJECT TO CHANGE WITHOUT NOTICE.



TITLE:
 InRow RD - AIR COOLED
 ACRD100 : 208-240V, 60Hz
 ACRD101 : 220-240V, 50Hz
 CONTROL WIRING

PROJECT: SUBMITTAL DRAWINGS SHEET 12 OF 12

DWG NO: ACRD100-101-ME3

ENGINEER: R.GRANTHAM/M.BROWN
 APPROVED: GUMISKEY/C.ZALDIVAR

REV. 1
 15-SEP-08
 17-SEP-08
 17-SEP-08
 THIRD ANGLE PROJECTION